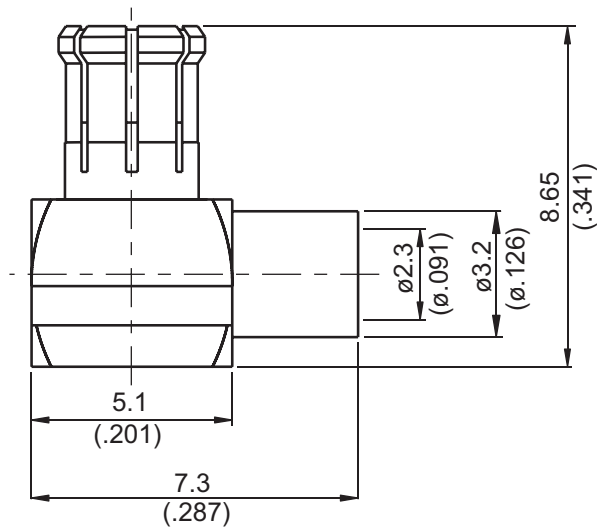


MCX3300-9085	MCX Plug Solder Right Angle For RG405; 6GHz VSWR 1.2	50Ω
--------------	---	------------



Parts	Material	Plating (Micro-inch)
Contact Pin	Brass	Gold 4 Over Nickel-Phosphorus Alloy 80 Over Copper 20
Cover	Brass	Gold 4 Over Nickel-Phosphorus Alloy 80 Over Copper 20
Insulator	Teflon	
Body	Phosphor Bronze	Gold 4 Over Nickel-Phosphorus Alloy 80 Over Copper 20

Weight: 0.88 g
Suitable Cables: Semi-rigid.085

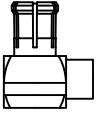


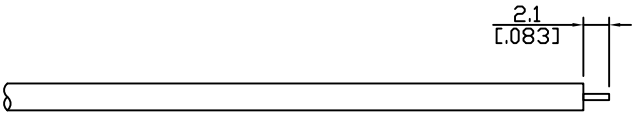
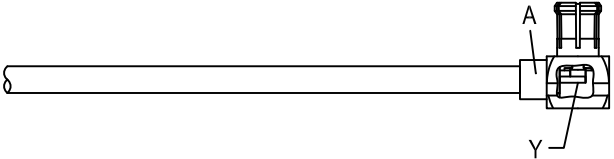
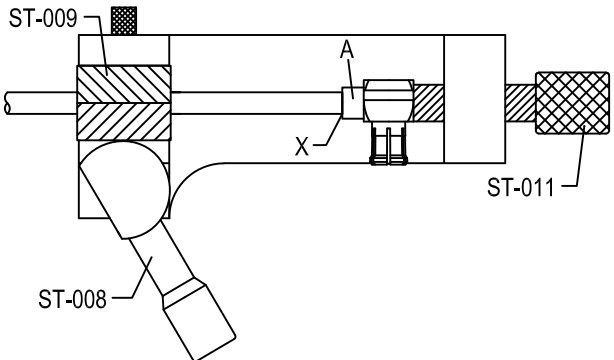
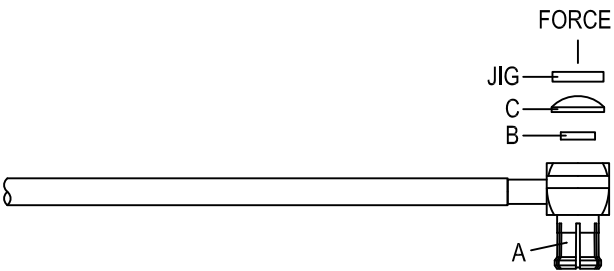
This part number complies with RoHS.
Notice: JYEBAO reserves the right to make modifications deemed appropriate.

MCX	MCX3300-9085																		
<div style="border: 1px solid black; padding: 2px; margin-bottom: 5px;">Interface</div> IEC 61169-36																			
<div style="border: 1px solid black; padding: 2px; margin-bottom: 5px;">Electrical Data</div> <table style="width: 100%; border-collapse: collapse;"> <tr> <td style="width: 50%;">Impedance</td> <td style="width: 50%;">50Ω</td> </tr> <tr> <td>Frequency range</td> <td>DC to 6GHz</td> </tr> <tr> <td>VSWR</td> <td>≤ 1.2 (DC to 6GHz)</td> </tr> <tr> <td>Insertion loss</td> <td>≤ 0.1dB to 1GHz; ≤ 0.15 to 3GHz</td> </tr> <tr> <td>Insulation resistance</td> <td>≥ 10000mΩ</td> </tr> <tr> <td>Contact resistance inner conductor</td> <td>≤ 5mΩ</td> </tr> <tr> <td>Contact resistance outer conductor</td> <td>≤ 2.5mΩ</td> </tr> <tr> <td>Dielectric withstanding voltage (at sea level)</td> <td>750 V rms</td> </tr> <tr> <td>Working voltage (at sea level)</td> <td>250 V rms</td> </tr> </table>		Impedance	50Ω	Frequency range	DC to 6GHz	VSWR	≤ 1.2 (DC to 6GHz)	Insertion loss	≤ 0.1dB to 1GHz; ≤ 0.15 to 3GHz	Insulation resistance	≥ 10000mΩ	Contact resistance inner conductor	≤ 5mΩ	Contact resistance outer conductor	≤ 2.5mΩ	Dielectric withstanding voltage (at sea level)	750 V rms	Working voltage (at sea level)	250 V rms
Impedance	50Ω																		
Frequency range	DC to 6GHz																		
VSWR	≤ 1.2 (DC to 6GHz)																		
Insertion loss	≤ 0.1dB to 1GHz; ≤ 0.15 to 3GHz																		
Insulation resistance	≥ 10000mΩ																		
Contact resistance inner conductor	≤ 5mΩ																		
Contact resistance outer conductor	≤ 2.5mΩ																		
Dielectric withstanding voltage (at sea level)	750 V rms																		
Working voltage (at sea level)	250 V rms																		
<div style="border: 1px solid black; padding: 2px; margin-bottom: 5px;">Mechanical Data</div> <table style="width: 100%; border-collapse: collapse;"> <tr> <td style="width: 50%;">Engagement force</td> <td style="width: 50%;">≤ 5.6 lbs</td> </tr> <tr> <td>Disengagement force</td> <td>1.8 to 4.5 lbs</td> </tr> <tr> <td>Contact captivation-axial</td> <td>2.3 lbs</td> </tr> <tr> <td>Durability (mating)</td> <td>≥ 500</td> </tr> </table>		Engagement force	≤ 5.6 lbs	Disengagement force	1.8 to 4.5 lbs	Contact captivation-axial	2.3 lbs	Durability (mating)	≥ 500										
Engagement force	≤ 5.6 lbs																		
Disengagement force	1.8 to 4.5 lbs																		
Contact captivation-axial	2.3 lbs																		
Durability (mating)	≥ 500																		
<div style="border: 1px solid black; padding: 2px; margin-bottom: 5px;">Environmental Data</div> <table style="width: 100%; border-collapse: collapse;"> <tr> <td style="width: 50%;">Temperature range</td> <td style="width: 50%;">-55°C to +155°C</td> </tr> <tr> <td>Thermal shock</td> <td>MIL-STD-202, Method 107, Condition F</td> </tr> <tr> <td>Moisture resistance</td> <td>MIL-STD-202, Method 106</td> </tr> <tr> <td>Corrosion</td> <td>MIL-STD-202, Method 101, Condition B</td> </tr> <tr> <td>RoHS</td> <td>Compliant</td> </tr> </table>		Temperature range	-55°C to +155°C	Thermal shock	MIL-STD-202, Method 107, Condition F	Moisture resistance	MIL-STD-202, Method 106	Corrosion	MIL-STD-202, Method 101, Condition B	RoHS	Compliant								
Temperature range	-55°C to +155°C																		
Thermal shock	MIL-STD-202, Method 107, Condition F																		
Moisture resistance	MIL-STD-202, Method 106																		
Corrosion	MIL-STD-202, Method 101, Condition B																		
RoHS	Compliant																		
<div style="border: 1px solid black; padding: 2px; margin-bottom: 5px;">Tooling</div> <table style="width: 100%; border-collapse: collapse;"> <tr> <td style="width: 50%;">Soldering fixture</td> <td style="width: 50%;">ST-008</td> </tr> <tr> <td>Insert for .085semi-rigid cable</td> <td>ST-009</td> </tr> <tr> <td>Locator tool</td> <td>ST-011</td> </tr> </table>		Soldering fixture	ST-008	Insert for .085semi-rigid cable	ST-009	Locator tool	ST-011												
Soldering fixture	ST-008																		
Insert for .085semi-rigid cable	ST-009																		
Locator tool	ST-011																		

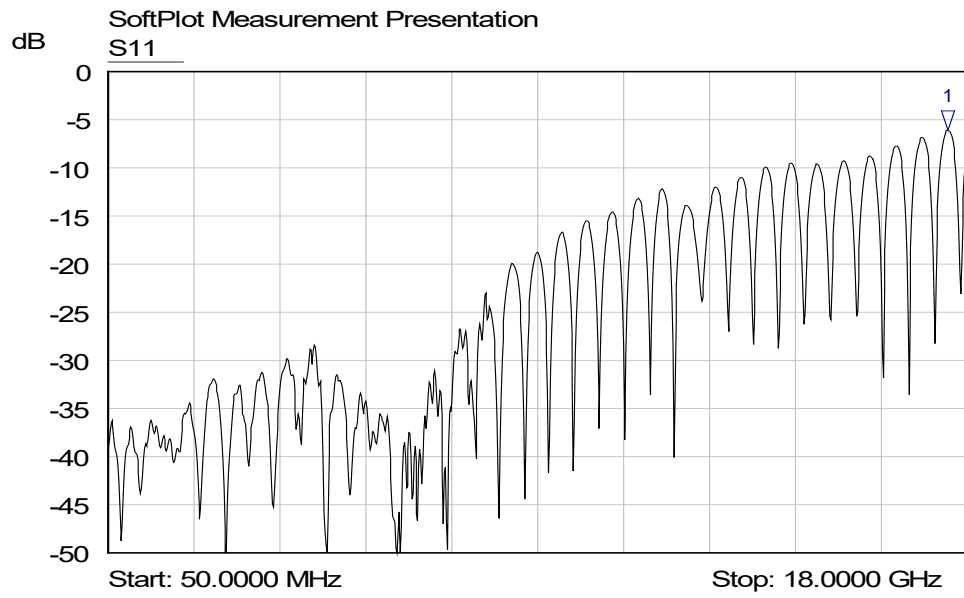
Notice: JYEBAO reserves the right to make modifications deemed appropriate.

JYE BAO CO., LTD.

CABLE ASSEMBLY INSTRUCTION

MCX3300-9085	DATE	2017/09/25	REV	—
A	B	C		
				
BODY	INSULATOR	COVER		
DIAGRAM	ASSEMBLY INSTRUCTION			
	Step 1: STRIP AS SHOWN.			
	Step 2: SLIDE CENTER CONDUCTOR ON THE CONTACT PIN OF CONNECTOR " A " AND SOLDER IN " Y ".			
	Step 3: USE SOLDERING FIXTURE " ST-008 ", INSERT TOOL " ST-009 " AND LOCATOR TOOL " ST-011 " TO FIX THE CONNECTOR. SOLDER IN " X ".			
	Step 4: PRESS ON THE TOP OF " B " AND " C " WITH JIGS.			
<p>This part number complies with RoHS. Notice: JYEBAO reserves the right to make modifications deemed appropriate.</p>				
APPROVED	CHECKED	DRAWING	<i>Albert</i>	

MCX3300-9085



Mkr	Trace	X-Axis	Value	Notes
1 ▾	S11	17.6007 GHz	-6.07 dB	