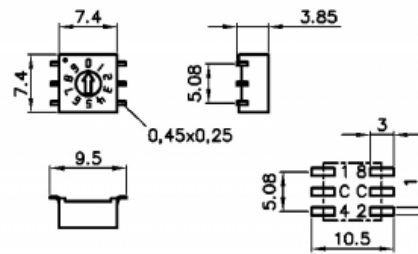


# Rotary Code Switch

## P36SMT 1 03 -

SMT Gull Wing Surface Mount Technology



### Mechanical Data

Type	horizontal
Fixation mode	SMT
Height	3.85mm
Length	7.4mm
Width	7,4mm
Pin connection	3+3
Perm. ambient temperature	-50...+125°C
Perm. storage temperature	-55...+135°C
Torque	1.2±0.2Ncm
Mech. lifetime	25 000 steps
Positions per rotation	10,16, more versions on request
Degree of protection	comparable IP67
Sealing	O-Ring
Humidity	21 days at 40°C, 93%RH
Sinus-vibration testing	acc. IEC 68-2-6
Frequency range	10...500...10Hz, sliding
Amplitude	6mm
Acceleration	10g
Shock testing	acc. IEC 68-2-27
Shock acceleration amplitude	50g
Duration of nominal shock	11ms
Directions	6 (±x, ±y, ±z)3 times each
Reflow soldering	10s/260°C
Iron soldering	4s/350°C

### Electrical Data

Operating voltage	≤ 42V
Contact load, static	≤ 0.4A
Contact load, dynamic	≤ 0.1A
Minimum load	1μA20mVDC
Test voltage	250V 50Hz/1min
Contact resistance	< 80mOhm
Insulation resistance	> 100MOhm

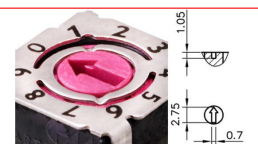
- solid PCB pins
- contacts with abrasion resistant hard gold plating
- lateral C-contact
- extra sealed design with high temperature resistance
- switches are solder and flux sealed and washable
- 100% electronic inspection and testing
- 90° turned zero position available



# HARTMANN

## Configuration

Actuators



Arrow-shaped slot

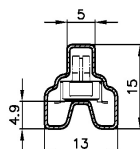
Codes

**Hexadezimal  
Typ 03**

	C	1	2	4	8	
0	●					0
1	●	●				●
2	●		●			2
3	●	●	●			●
4	●			●		4
5	●	●		●		●
6	●		●	●		6
7	●	●	●	●		●
8	●				●	8
9	●	●			●	●
10	●		●		●	A
11	●	●	●		●	●
12	●			●	●	C
13	●	●		●	●	●
14	●		●	●	●	E
15	●	●	●	●	●	●

Hexadecimal, 16

Packing



Tube