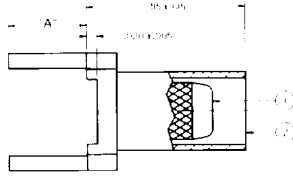
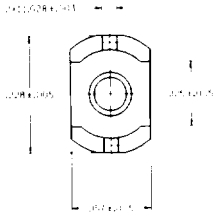


142-0002-211/216  
 142-0003-231/236  
 142-0004-211/216

142-0002-221/226  
 142-0003-241/246  
 142-0004-221/226

# Cable Termination Straight PC Mount



- 2 Legs Increase Back Side Real Estate
- .020" Standoffs For Improved Cleaning
- Crimp Assembly

Part Number	Cable Type	"A"	Item 1 Body	Item 2 Crimp Sleeve	Crimp Hex Size
142-0002-211	RG 178	.155+/- .015	Brass	Copper	.105
142-0002-221	RG 178	.110+/- .015	Gold pl .00001 min over	Gold pl .00001 min over	.105
142-0003-231	RG 316	.155+/- .015	Nickel pl .00005 min over	Nickel pl .00005 min over	.128
142-0003-241	RG 316	.110+/- .015	Copper pl .00005 min	Copper pl .00005 min	.128
142-0004-211	RG 316 DS	.155+/- .015			.151
142-0004-221	RG 316 DS	.110+/- .015			.151
142-0002-216	RG 178	.155+/- .015	Brass	Copper	.105
142-0002-226	RG 178	.110+/- .015	Nickel pl .0001 min over	Nickel pl .0001 min over	.105
142-0003-236	RG 316	.155+/- .015	Copper pl .00005 min	Copper pl .00005 min	.128
142-0003-246	RG 316	.110+/- .015			.128
142-0004-216	RG 316 DS	.155+/- .015			.151
142-0004-226	RG 316 DS	.110+/- .015			.151

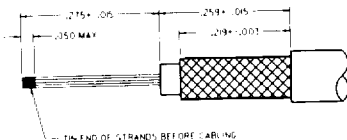
**Specifications:**  
 Impedance: 50 Ohms

**Mechanical:**  
 Cable Retention:

- RG 178 ..... 10 lbs min axial force
- RG 316 ..... 20 lbs min axial force
- RG 316 DS ..... 25 lbs min axial force

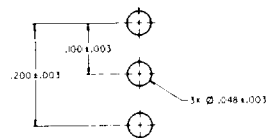
Cable Acceptability:

- RG 178 ..... RG 178/U, RG 196/U
- RG 316 ..... RG 188/U, RG 316/U, RG 161/U, RG 174/U, RG 179/U
- RG 316 DS ..... RG 188 Double Shielded, RG 316 Double Shielded



**Cable Strip Dimensions**

**Made in America**



**Mounting Hole Layout**