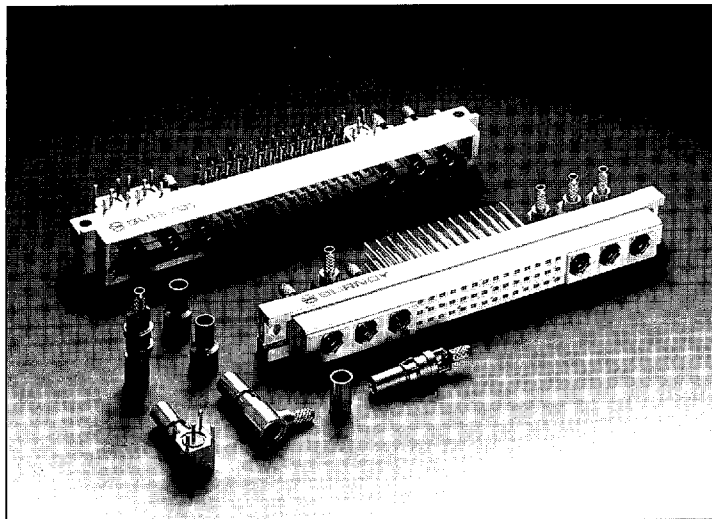




Coaxial Contacts For DIN 41612 Type M Connectors



The 50 ohm coaxial contacts, conforming to the DIN 41626 norm, are designed to be used with two piece DIN 41612 Type M printed circuit connectors (pages 28 and 30). Other variations are available, consult your representative for details.

PERFORMANCE CHARACTERISTICS

- IMPEDANCE : 50 Ω
- OPERATING FREQUENCY: Maximum 30 GHz
Optimum 0-10 GHz
- REFLECTION COEFFICIENT: 0.05 Max up to 1 GHz
(for cable-to-cable connections only)
0.07 Max up to 4 GHz
0.1 Max up to 10 GHz
- PEAK VOLTAGE: 750 V eff
- OPERATING VOLTAGE: 250 V eff
- CONTACT RESISTANCE: Outer Contact: 3 m Ω Max.
Inner Contact: 10 m Ω Max.
- INSULATION RESISTANCE: Outer Contact: 10⁶ M Ω Min.
- OPERATING TEMPERATURE: -67°F (-55°C) to 257°F (125°C)
- DURABILITY: 200 Cycles Min.

CONSTRUCTION

- OUTER AND INNER CONTACT: High Conductive Copper Alloy
- SPRING PART: Beryllium Copper
- INSULATION: PTFE
- CLIP: Beryllium Copper

CONTACT FINISH

CODE	OUTER CONTACT	INNER CONTACT
E2R*	30 μ m (.76 microns) Gold	118 μ m (3.0 microns) Gold

*Standard plating. For other platings, consult factory.

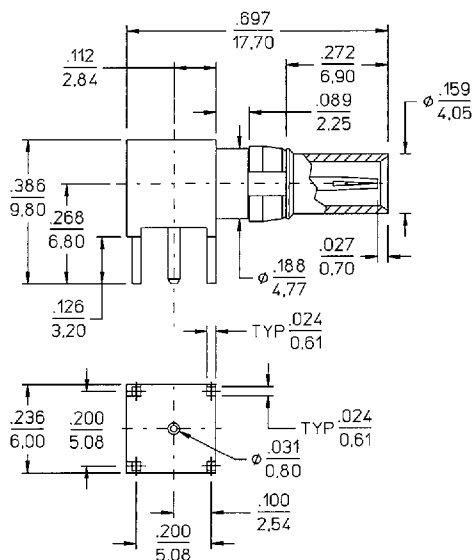
CABLE ACCOMMODATIONS

- RG174 A/U
- RG188 A/U
- RG316/U
- RG187 A/U†
- RG179 B/U†

† MEETS THE DIMENSIONAL REQUIREMENTS OF THESE 75 Ω CABLE TYPES.

Dimensions

Female Coaxial Wave Solder (For Plug Connector Housing)



CAT # RCP1R01K00E2R

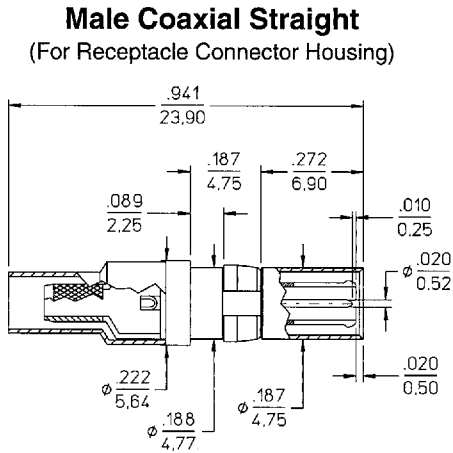
Tooling for Male and Female Crimp Variations

- Terminating Kit Cat. No. Y1MDIN
Includes ratchet controlled crimp tool,
die set and cable stripper.
- Extraction Tool Cat. No. RX81E2

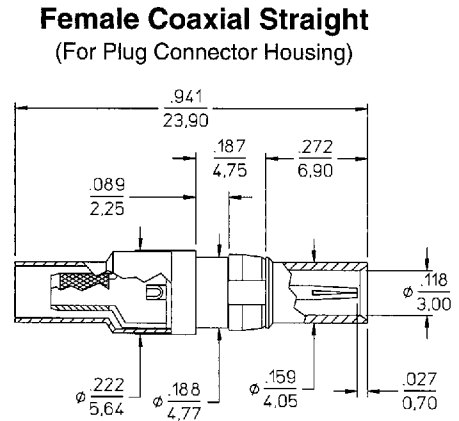


Coaxial Contacts For DIN 41612 Type M Connectors

Dimensions



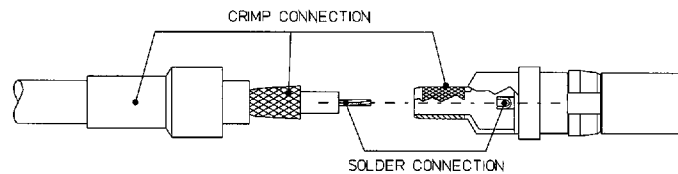
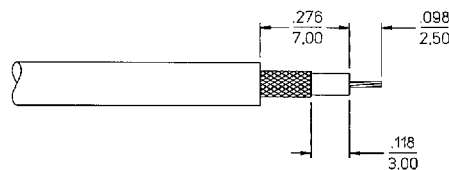
CAT # RMPIS01S02E2R



CAT # RCPIS01S02E2R

Assembly Instructions

Cable Stripping Lengths



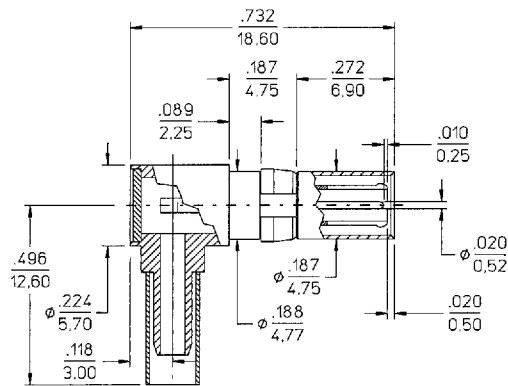
Straight Contacts



Coaxial Contacts For DIN 41612 Type M Connectors

Dimensions

Male Coaxial Right Angle (For Receptacle Connector Housing)

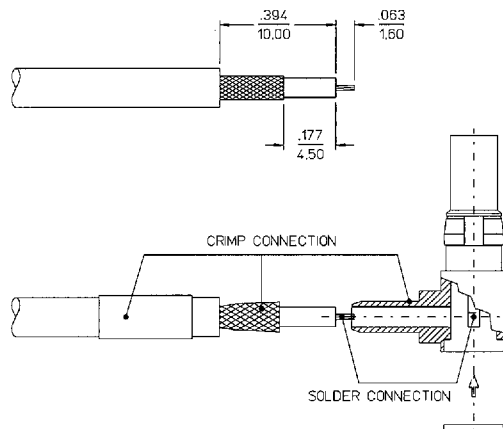


CAT # RMP1R01S02E2R*

*Recommended for .062" back panel thicknesses only.

Assembly Instructions

Cable Stripping Lengths



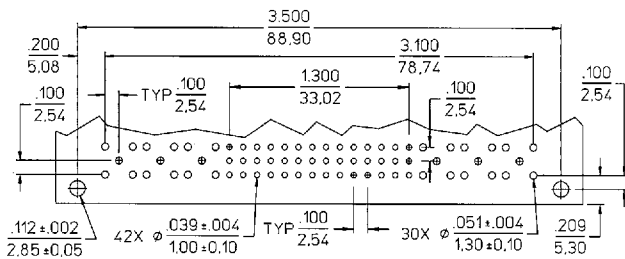
Right Angle Contacts



Coaxial Contacts For DIN 41612 Type M Connectors

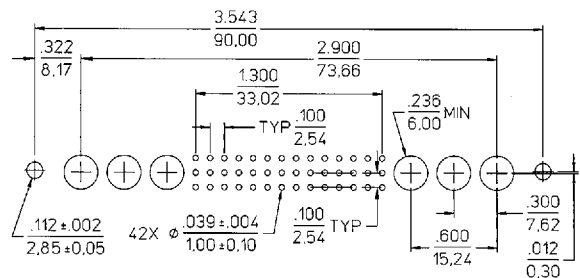
Recommended Printed Circuit Board Layout

Plug Connector / Female Wave Solder Coax Contacts (Page 32)

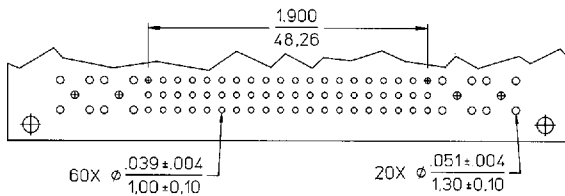


Connector: PI42 Plug (Page 28)

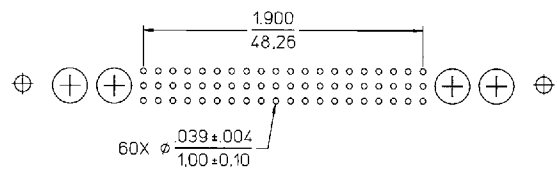
Receptacle Connector / Male Crimp Coax Contacts (Page 33, 34)



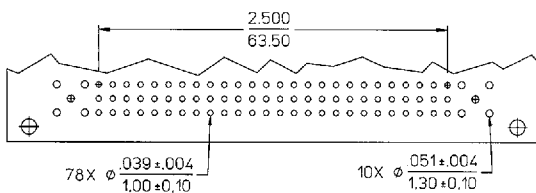
Connector: PI42 Receptacle (Page 30)



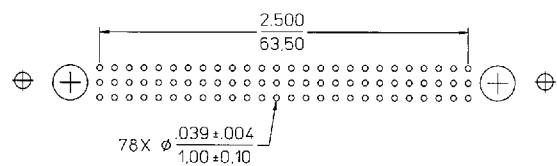
Connector: PI60 Plug (Page 28)



Connector: PI60 Receptacle (Page 30)



Connector: PI78 Plug (Page 28)



Connector: PI78 Receptacle (Page 30)

Note: When using plug connectors with straight (crimp type) female coax contacts, omit the coax contact drill pattern above.