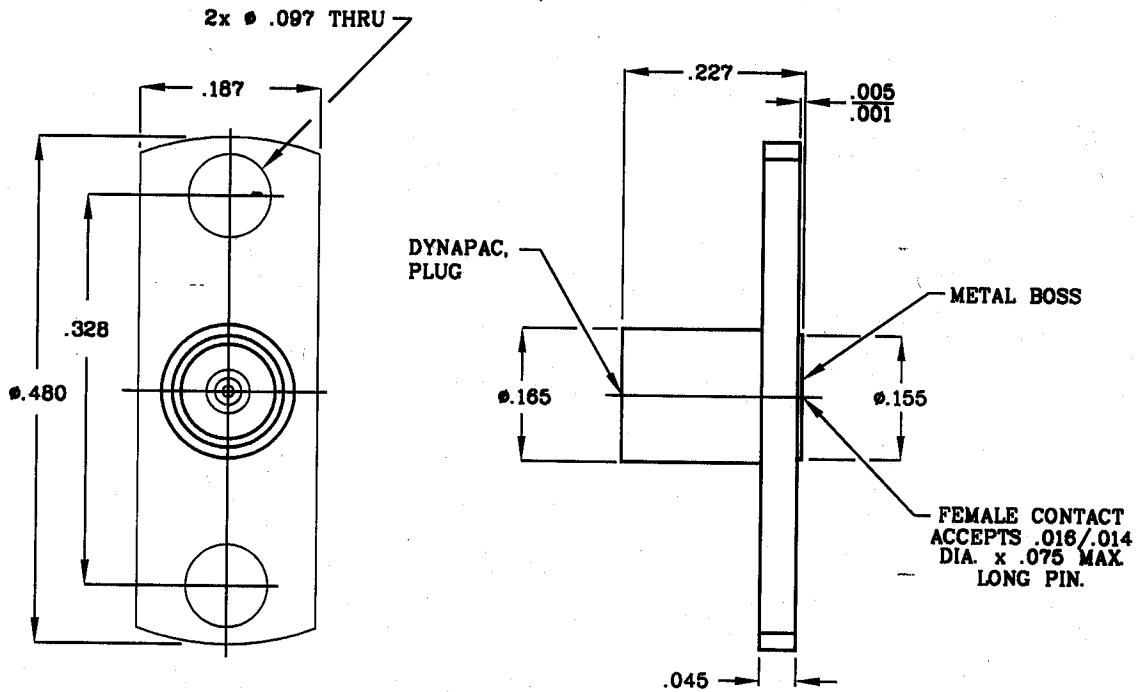


# SPECIFICATION CONTROL DRAWING



1. MATING INTERFACE DIMENSIONS PER DYNAWAVE SPECIFICATION MD-21.

## 2. ELECTRICAL

FREQUENCY RANGE GHz	_____	DC TO 26.5 GHz.
VSWR (MAX.) *	_____	1.05 + .006 x FGHz.
INSERTION LOSS (dB MAX.) *	_____	.045 dB x $\sqrt{\text{FGHz.}}$
NOMINAL IMPEDANCE (OHMS)	_____	50
VOLTAGE RATING (MAX. VRMS)	_____	250
RF LEAKAGE (MIN. dB DOWN)	_____	100 dB - FGHz.
TEMPERATURE RATING (DEGREES CENTIGRADE)	_____	-65° c TO +150° c
DIELECTRIC WITHSTANDING VOLTAGE (MAX. VRMS)	_____	500
INSULATION RESISTANCE (MIN. MEGOHMS)	_____	2,500
CONTACT RESISTANCE		
• CENTER CONTACT (MAX. MILLIOHMS)	_____	3.0
• OUTER CONTACT (MAX. MILLIOHMS)	_____	2.0

\* TERMINATED IN A 50 OHM LOAD

REV.	DCN NO.	DATE	APP.	DIMENSIONS ARE IN INCHES TOLERANCES			INCORPORATED HAVERHILL, MA 01835
AA	02-1105	12/11/02	BW	DECIMALS .X ± .030 .XX ± .010 .XXX ± .005	FRACTIONAL 3/64	ANGULAR X° ± 1' 0" X' ± 15"	
				SURFACE ROUGHNESS 63 $\sqrt{\text{MIL-STD 10.}}$			TITLE DYNAPAC, PLUG 2 HOLE FLANGE MOUNT FIELD REPLACEABLE (WITH METAL BOSS)
				DRAWN G.E.	DATE 12/11/02		
				APPROVED BW	DATE 12/11/02		
				CODE IDENT. 2J899	SHEET 1 OF 2	DWG. NO. 2152-0881-6232	

# SPECIFICATION CONTROL DRAWING

## 3. MECHANICAL

### CAPTIVATION-CENTER CONTACT

- MIN. AXIAL FORCE \_\_\_\_\_ 3.5 LBS.
- MIN. RADIAL TORQUE \_\_\_\_\_ 2.5 IN.OZ.

### CONNECTOR ENGAGEMENT FORCES

- INSERTION (MAX. OUNCES) \_\_\_\_\_ N/A
  - WITHDRAWAL (MIN. OUNCES) \_\_\_\_\_ N/A
- CONNECTOR DURABILITY (MIN. MATING) \_\_\_\_\_ 500

## 4. ENVIRONMENTAL

- TEMPERATURE CYCLING \_\_\_\_\_ MIL-STD-202, METHOD 102, COND. C ( -65° c TO + 165° c )
- SHOCK \_\_\_\_\_ MIL-STD-202, METHOD 213, COND. I (100 G's)
- VIBRATION \_\_\_\_\_ MIL-STD-202, METHOD 204, COND. D (20 G's)
- MOISTURE RESISTANCE \_\_\_\_\_ MIL-STD-202, METHOD 106, LESS STEP 7b
- CORROSION \_\_\_\_\_ MIL-STD-202, METHOD 101, COND. B (48 HOURS)
- BAROMETRIC PRESSURE (ALTITUDE) \_\_\_\_\_ MIL-STD-202, METHOD 105, COND. C ( 70,000 FT. ) ( 125 VRMS )

## 5. MATERIAL

- CONNECTOR BODY \_\_\_\_\_ STAINLESS STEEL PER ASTM A 582, TYPE 303, COND. A.
- CENTER CONTACT \_\_\_\_\_ BERYLLIUM COPPER PER ASTM B 196, COPPER ALLOY UNS C17300.
- INSULATOR \_\_\_\_\_ TEFLON PER ASTM D 4894-91

## 6. FINISH

- CONNECTOR BODY \_\_\_\_\_ PASSIVATE PER QQ-P-35C, TYPE VI.
- CENTER CONTACT \_\_\_\_\_ GOLD PER MIL-G-45204, TYPE II, GRADE C, CLASS 2  
(.000010 MIN.) OVER NICKEL PER QQ-N-290, CLASS 1  
(.00010 MIN.) OVER COPPER PER MIL-C-14550 (.000010 MIN.)
- INSULATOR \_\_\_\_\_ N/A