

ANALOG CLOCK IC

■ GENERAL DESCRIPTION

The NJU6303 is an analog clock IC driving a stepping motor.

It consists of a quartz crystal oscillator, frequency divider, output pulse generators, push-pull motor drivers and alarm output.

The input and output of the quartz crystal oscillator are provided with oscillation capacitors. Consequently, only a quartz crystal is required as the external component.

The motor driving pulse width made by output pulse generators, alarm modulation pattern and alarm active level are all option.

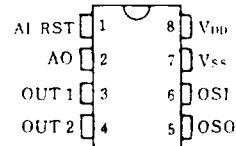
■ PACKAGE OUTLINE



NJU6303XD

NJU6303XM

■ PIN CONFIGURATION



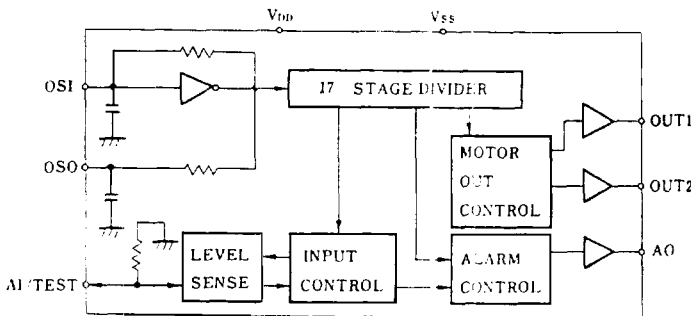
■ FEATURES

- Low Operating Current — 1uA typ.
- Oscillation Capacitor On-chip
- Operating Voltage — 1.5V
- Package Outline — DIP/DMP 8
- C-MOS Technology

■ LINE-UP

Version	Motor Driving		Alarm Output			AI/RST	Int. Capacitor	
	Pulse Width	Active	Fundamental	Modulation	Active		CI	CO
A	31.25ms	H	2 kHz	8Hz+1Hz	L	AI	2pF	23pF

■ BLOCK DIAGRAM



■ MASK OPTION

Except the Line-up table version also available selecting from the following option.

- Motor driving pulse width
- Motor output active level
- Alarm modulation wave
- Alarm output active level
- AI/RST Function (Pin No.1)
- Oscillation capacitor

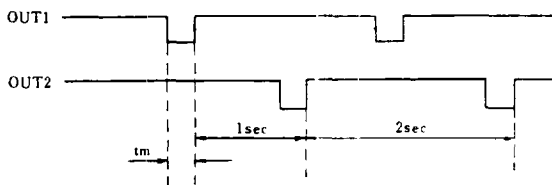
AI/RST terminal can change to RESET.

■ TERMINAL DESCRIPTION

NO.	SYMBOL	F U N C T I O N
1	AI/RST	Alarm/Reset Input Terminal. (Either one is selected by mask option.) a) AI Function Normally Active "L", Active "H" also available. The alarm signal is output from AO terminal when this terminal is V_{DD} . b) RST Function Normally Active "L", Active "H" also available. When AI terminal is V_{SS} level, Motor driving output is stopped, and internal counter is reset. c) User-Test Function When $1/2V_{DD}$ level input to this terminal, the AO terminal output continuous 2kHz frequency for oscillation frequency adjustment.
2	AO	Alarm Output Terminal. Normally Active "L", Active "H" also available. When user testing, The constant wave of 2kHz is output from this terminal.
3	OUT1	Stepping Motor Driving Terminal. Normally Active "L", Active "H" also available.
4	OUT2	Stepping Motor Driving Terminal. Normally Active "L", Active "H" also available.
5	OSO	Quartz Crystal Connecting Terminal. On-chip capacitance=30pF Max. (Refer the Line-up table for actual capacitance value)
6	OSI	Quartz Crystal Connecting Terminal. On-chip capacitance=15pF Max. (Refer the Line-up table for actual capacitance value)
7	V_{SS}	GND
8	V_{DD}	+1.5V

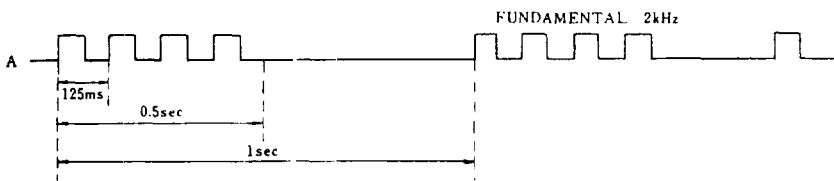
■ FUNCTIONAL DESCRIPTION

(1) Motor Driving Output
 (A Version)



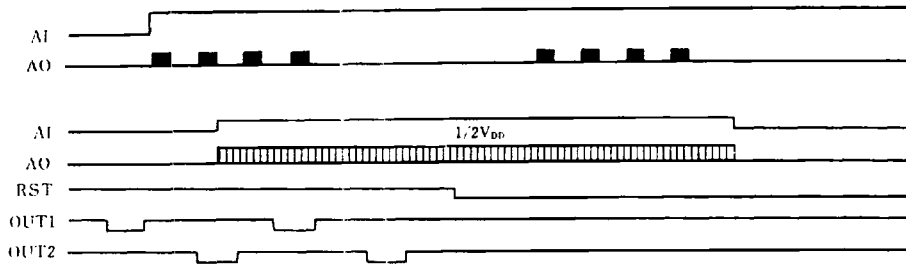
(2) Alarm Output Waveform

Alarm signal of the following pattern is output from the Alarm Output Terminal.
 (Pin No.2)



(3) Alarm Input/User Test

When $1/2V_{DD}$ level is input on pin No.1, AO output the continuous waveform for frequency adjustment shown below.


■ ABSOLUTE MAXIMUM RATINGS

 ($T_a=25^{\circ}\text{C}$)

PARAMETER	SYMBOL	RATINGS	UNIT
Supply Voltage	V_{DD}	- 0.3 ~ 7.0	V
Input Voltage	V_{IN}	- 0.3 ~ $V_{DD}+0.3$	V
Power Dissipation	P_D	(DIP) 250 (DMP) 200	mW
Operating Temperature	T_{opr}	- 20 ~ + 70	$^{\circ}\text{C}$
Storage Temperature	T_{stg}	- 40 ~ + 150	$^{\circ}\text{C}$
Soldering Temperature	T_{SLD}	260	$^{\circ}\text{C}$
Soldering Time	t_{SLD}	10	sec

■ ELECTRICAL CHARACTERISTICS

 ($V_{DD}-V_{SS}=1.5\text{V}, f_o=32.768\text{kHz}, T_a=25^{\circ}\text{C}$)

PARAMETER	SYMBOL	CONDITIONS	MIN	TYP	MAX	UNIT
Operating Voltage	V_{DD}		1.1		2.0	V
Operating Current	I_{DD}	No Load		1.0	2.0	μA
Motor Driving Current	I_M	$V_{DL}=1.2\text{V}, R_L=200\Omega$	4.0			mA
Alarm Output Current	I_{OH}	$V_{DD}=1.2\text{V}, V_{OH}=0.7\text{V}$	0.3			mA
	I_{OL}	$V_{DD}=1.2\text{V}, V_{OL}=0.5\text{V}$	0.3			
Input Voltage	V_{IH}	No.1 Terminal (AI or RST)	$V_{DL}-0.3$		V_{DD}	V
	V_{IL}		V_{SS}		$V_{SS}+0.3$	
	V_{TEST}		$0.9*1/2V_{DD}$	$1/2V_{DD}$	$1.1*1/2V_{DD}$	
Input Resistance	R_{IN}		10	30	90	$\text{k}\Omega$
Oscillation Stability	$\Delta f/f$				1.0	ppm/0.1V
Oscillation Capacitor	C_C	$f=100\text{kHz}$	-7%	Note	+7%	μF
	C_I					

Note) Typical value of on-chip capacitor is mentioned in Line-up table.